



## Useful information


Address: Station Road, Backwell BS48 3LH


 Car parking - 268 spaces. There is no taxi rank available


 For bus information please visit the integrated journey planner: [www.journeyplanner.travelwest.info](http://www.journeyplanner.travelwest.info)

 No toilets at this station

 Ticket office near the shelter  
Monday to Friday - 06:30 to 09:30  
Ticket machines available

 Accessibility & Mobility: Accessible ticket machines. This station does not have step free access to any platform. For further information on assisted travel please visit [www.GWR.com](http://www.GWR.com). Impaired mobility set down and pick up points available on Station Close

 Up to two dogs, cats, or other small domestic animals can travel for free. Dogs must be on a lead, or in a rigid pet carrier. All other pets must be in a pet carrier

 Cycle storage is available at this station. Bikes can be carried on our trains free of charge. For further information on travel with cycles visit [www.GWR.com](http://www.GWR.com)

 For any further helpful train travel information visit [www.GWR.com](http://www.GWR.com)

## GWR Customer Service

For sales and support please call 03457 000 125 (09:00-17:00 every day)

For information on assisted travel, planning your journey and tickets visit [www.GWR.com](http://www.GWR.com)

Go paperless with mobile e-tickets - download the GWR app now and be more mobile.

## About us

The Severnside Community Rail Partnership is a Department for Transport Accredited Community Rail Partnership.

We are a Community Interest (not for profit) Company, working with local communities to encourage the use of local trains, to ensure that access to local stations is easy, and to enhance these stations so they provide a safe and welcoming environment. Our station improvement projects are delivered with the assistance of volunteers, schools, youth groups and the Community Payback scheme.

These leaflets have been produced with support from Great Western Railway Customers and Communities Improvement fund.

 @severnsidecrp  Severnside Community Rail Partnership

 severnsidecrp

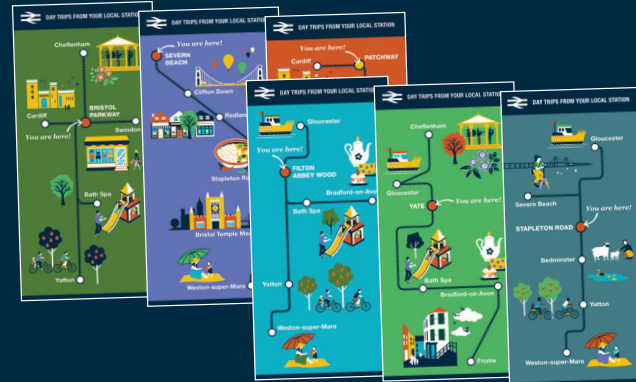


Project lead & content: Anne-Louise Perez / [yourstreetconsulting@gmail.com](mailto:yourstreetconsulting@gmail.com)  
Design: Susan Taylor / [hello@susantaylor.com](mailto:hello@susantaylor.com)  
[www.taylorandperez.com](http://www.taylorandperez.com)

All information on this leaflet correct at time of print

## Also available...

Check out our other guides on the GWR line! Explore the places you can reach from Bristol Parkway, Severn Beach, Patchway, Filton Abbey Wood, Yate and Stapleton Road.



## DAY TRIPS FROM YOUR LOCAL STATION





# Day trips from Nailsea & Backwell!

Kick off your adventure by train - sit back, get comfortable, chat, connect and relax before you've even reached your destination.

We've given you a few ideas for you to create a fun & special day out for you, your family or friends. We've picked activities to suit all budgets, whether you enjoy culture, exploring the outdoors or shopping. Best of all, many of them are free! With most destinations less than an hour away and all journeys direct, you'll have time to make the most of your day. So get planning, hop on board and let your experience begin.

## Calling at... Bedminster

🕒 40 mins

Bedminster station is well placed for green spaces, shopping, street art and even a city farm - all are within a short and easy walk away. The farm is home to a range of farmyard animals, and offers plenty of activities to keep the little ones entertained. For lovers of open space head to Victoria Park, a large, hilly and grassy setting perfect for a good play, walk and a picnic. Browse North Street where you'll discover a bounty of unique independent shops, and on Sundays visit the open air market which is crammed full of local produce, crafts and delicious food offerings. Don't forget while you are exploring Bedminster, keep a look out for plenty of world famous street art.

- Windmill Hill City Farm\*
- Victoria Park\*
- Street Art\*
- North Street Indie shops
- Sunday Market\*

\* FREE

## Calling at... Yatton

🕒 5 mins

The picturesque Strawberry Line Cycle Path to Cheddar begins from Yatton train station. With bike hire from the station itself, it's never been easier to start your cycling adventure. On this flat & family friendly path, you'll pedal through the famous Sandford apple orchards used to make Thatchers Cider. This picture perfect countryside, ideal for picnics, has a number of stops along the way to refresh and get ice creams. You might even sample the famous cider! Look out for slow worms, newts & dragonflies - this route is an oasis of wildlife.

- Strawberry Line Route\*
- Cider Heritage Centre\*
- Strawberry Line Café & Cycle Hire
- Nature Spotting\*

\* FREE

## Calling at... Weston-super-Mare

🕒 48 mins

The famous Grand Pier and sweeping Victorian promenade (fronted by a beach with views across the Bristol Channel) is a 15 minute stroll from the station through town. The expansive flat & sandy beach is excellent for activities; kite flying, playing football, building sandcastles, donkey rides or relaxing in a deckchair with a good read. Bring a picnic or get some really tasty fish & chips and enjoy them with a sea view. Sitting overlooking the town offering stunning coast views is a large, shady and pretty woodland, with accessible footpaths and wild flowers to spot.

- Beach\*
- The Grand Pier
- Weston Woods

\* FREE

## Calling at... Taunton

🕒 1 hour 20 mins

Just a short walk from the station is the magnificent French Weir Park, with its play areas and community activity centre providing kayak and paddle board hire - making full use of the River Tone that runs alongside. Don't forget your picnic blankets. In the town centre you'll discover a 12th century castle and 2 museums (including the Military Museum) which are free to visit and provide an interactive, multi-sensory and hands on experience - satisfying the mini historians in your lives.

- French Weir Park/River Tone\*
- Taunton Castle\*
- Somerset Museum\*
- Kayak & Paddle Board Hire

\* FREE

## Calling at... Exeter St Davids

🕒 1 hour 20 mins

Film enthusiasts will appreciate the Cinema Museum which lies a short walk from the station. For outdoor fun, Flowerpots Playing Fields is not far away and boasts a skate park and play area. Its riverside setting is ideal for a picnic. Cycle hire is available from just outside the station. In minutes you'll find yourself in the centre of Exeter with its magnificent cathedral and its historical yet contemporary quayside. Discover little shops and cafés in the former warehouses, or take a gentle boat ride along the river. A visit to the Customs House Visitor Centre will inform you of this city's fascinating history from the Roman times to today.

- The Bill Douglas Cinema Museum\*
- Boat Ride
- Custom House Visitor Centre\*
- Historic Quayside\*

\* FREE

## Best value fares

### Child train fares

Children aged 5-15 get 50% off fares. Under 5s travel free

### Family & Friends Railcard

Save money with a Family & Friends Railcard which costs £30. Up to 4 adults & 4 children can travel together on one card (you do not have to be related). Adults save 1/3 and children aged 5 to 15 years get a 60% discount on kids' fares. For more information & ways to save with other Railcards, visit [www.railcard.co.uk](http://www.railcard.co.uk)

### Top offers when you travel by train - visit [www.GWR.com](http://www.GWR.com) to find out more

- Thermae Bath Spa - 4 hours for the price of 2 hours
- 2 for 1 Bath Glass blowing
- 2 for 1 ride wristbands on Weston-super-Mare pier

### GroupSave

Save money when travelling in a group with GroupSave. Get 1/3 off tickets when between 3 and 9 people travel together